

1x2 1060/1550nm Fused PM Fiber Standard WDM

Features

- Low Excess Loss
- Polarization Insensitive
- High Power Handling
- Available for Slow or Fast Axis Operation
- Telcordia GR-1221 Compliant Test

Application

- PM Fiber EDFA
- Monitoring in Coherent Communication
- Fiber Lasers



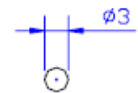
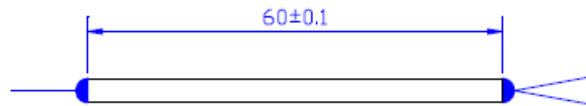
Specifications

Parameter	Unit		Premium	A grade
Pump Channel	nm		1064 ± 10	
Insertion Loss	dB	Max.	0.3	0.4
Polarization Extinction Ratio	dB	Min.	20	17
Isolation @1530 to 1565nm	dB	Min.	18	17
Signal Channel	nm		1530 to 1565	
Insertion Loss	dB	Max.	0.5	0.7
Polarization Extinction Ratio	dB	Min.	20	17
Isolation @ 1064 ± 10nm	dB	Min.	18	17
Power Handling	W	Max.	2	
Operating Temperature	°C	-	-40 to +85	
Storage Temperature	°C	-	-50 to +85	
Package Type	mm	-	S7/S9/M1	

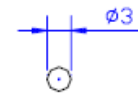
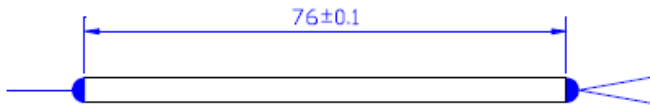
* All specifications are before connectors. PER is 2dB lower and EL is 0.2dB higher after connectors

Package dimension

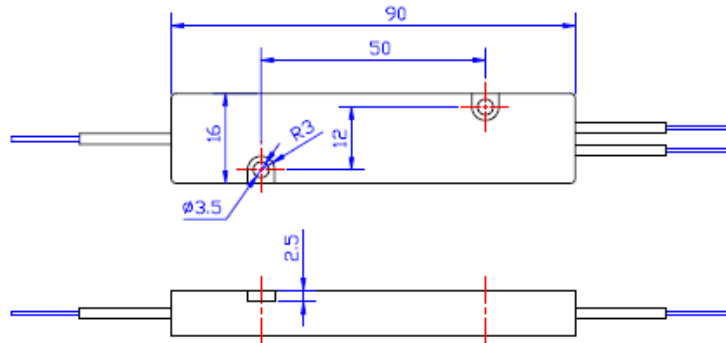
S7



S9

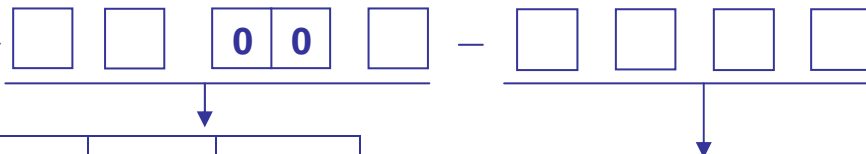


**M1
ABS**



Ordering Information

PMSW—



Wavelength	Structure		Grade
E – 1064/1550	1 - 1x2		P - Premium A - A grade

Package	Fiber Type	Fiber Length	Connector
6 – S7 with 250µm bare fiber 8 – S9 with 0.9mm loose tube D – M1 with 3mm cable	E – Panda fiber	0 - 0.5m 1 - 0.75m 2 - 1.0m	0 - None 1 - FC/PC 2 - FC/SPC 3 - FC/APC 7 - FC/UPC

Contact Information

For more information about BATi's' leadership in photonics devices, visit our website at www.bostonati.com.

To obtain additional technical information or to place an order for this product, please contact us at:

Phone: 1-781-935-2800
Fax: 1-781-935-2860
E-mail: sales@bostonati.com