

1x2 (2x2) Fused PM Fiber Standard Splitter (Mixer)

Features

- Low Excess Loss
- High Extinction Ratio
- High Power Handling
- Available for Slow or Fast Axis Operation
- Telcordia GR-1221 Compliant Test



Application

- Optical Amplifier
- Power Monitoring
- Coherent Communication
- Fiber Gyroscope

Specifications

Parameter	Unit		Premium	A grade	Premium	A grade
Port Configuration			1x2 or 2x2			
Central Wavelength ¹	nm	-	633, 780, 830, 980, 1064		1310, 1480, 1550	
Bandwidth	nm	-	±20			
Excess Loss	dB	Typ.	0.6	0.8	0.2	0.3
Excess Loss	dB	Max.	0.8	1.0	0.4	0.6
Polarization Extinction Ratio	dB	Min.	18	15	20	17
Return Loss ²	dB	Min	50	45	50	45
Directivity	dB	Min.	55			
Power Handling	W	Max.	2			
Operating Temperature	°C	-	-40 ~ +85			
Storage Temperature	°C	-	-50 ~ +85			
Package Type	mm	-	S6/S8/M1			

* All specifications are before connectors. PER is 2dB lower and EL is 0.2dB higher after connectors

¹ Central wavelength can be customized for different applications

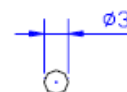
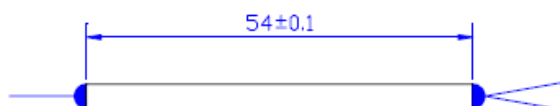
² Test at central wavelength only.

Splitting Ratio & Its Tolerance

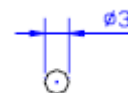
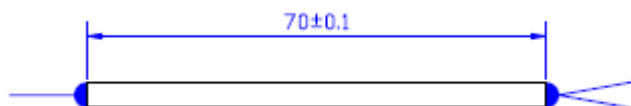
Splitting Ratio	Maximum Splitting Ratio Tolerance (%)	
	Premium	A Grade
99/1	± 0.5	± 0.6
98/2	± 0.8	± 1.0
95/5	± 1.5	± 1.7
90/10	± 2.2	± 2.4
80/20	± 2.5	± 3.0
70/30	± 3.0	± 3.7
60/40	± 4.0	± 4.8
50/50	± 5.0	± 6.0

Package dimension

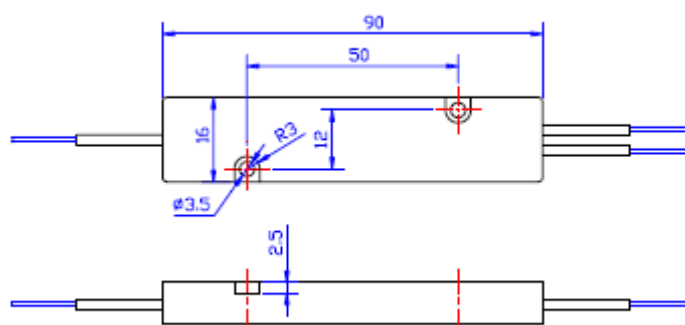
S6



S8



**M1
ABS**



Ordering Information

PMSS

Wavelength	Structure	Splitting Ratio	Grade
4 - 1550 nm 5 - 1480 nm 7 - 1310 nm 8 - 1064nm 9 - 980nm B - 633nm L - 780nm K - 830nm	1 - 1x2 2 - 2x2	99 – 99:1 98 – 98:2 95 – 95:5 90 – 90:10 80 – 80:20 70 – 70:30 60 – 60:40 50 – 50:50	P - Premium A - A grade

Package	Fiber Type	Fiber Length	Connector
5 – S6 with 250µm bare fiber 7 – S8 with 0.9mm loose tube D – M1 with 3mm cable	E – Panda fiber	0 - 0.5m 1 - 0.75m 2 - 1.0m	0 - None 1 - FC/PC 2- FC/SPC 3 - FC/APC 7 - FC/UPC

Contact Information

For more information about BATi's' leadership in photonics devices, visit our website at www.bostonati.com.

To obtain additional technical information or to place an order for this product, please contact us at:

Phone: 1-781-935-2800

Fax: 1-781-935-2860

E-mail: sales@bostonati.com