

1x2 (2x2) Compact Fused Hybrid PM Fiber Tap

Features

- Low Excess Loss
- High Extinction Ratio
- High Power Handling
- Available for Slow or Fast Axis Operation
- Telcordia GR-1221 Compliant Test

Application

- Optical Amplifier
- Power Monitoring
- Telecomm Systems
- Test Equipment



Specifications

Parameter	Unit		Premium	A grade	Premium	A grade
Port Configuration			1x2 or 2x2			
Central Wavelength ¹	nm	-	633, 780, 830, 980, 1064		1310, 1480, 1550	
Bandwidth	nm	-	±20			
Excess Loss	dB	Typ.	0.6	0.8	0.3	0.5
Excess Loss	dB	Max	0.8	1.0	0.5	0.7
PER for Through Ports ²	dB	Min	20	17	20	17
Return Loss ³	dB	Min	50	45	50	45
Directivity	dB	Min	55			
Operating Power	W	Max	2			
Operating Temperature	°C	-	-40 ~ +85			
Storage Temperature	°C	-	-50 ~ +85			
Package Type	mm	-	S4 /S6			

* All specifications are before connectors. PER is 2dB lower and EL is 0.2dB higher after connectors

¹ Central wavelength can be customized for different applications

² Above PER is for more than 10%(CR) port, it's 2dB lower for no more than 10%(CR) port, and 4dB lower for no more than 5%(CR) port.

³ Test at central wavelength only.

Splitting Ratio & Its Tolerance

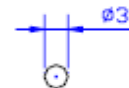
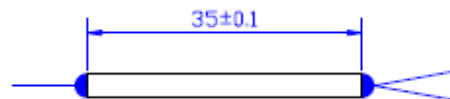
Splitting Ratio	Maximum Splitting Ratio Tolerance (%)	
	Premium	A Grade
99.5 / 0.5	± 0.2	± 0.3
99 / 1	± 0.4	± 0.5
98 / 2	± 0.7	± 1.0
95 / 5	± 1.8	± 2.1
90 / 10	± 2.5	± 3.0
80 / 20	± 3.0	± 4.0

Fiber Type

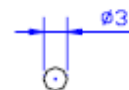
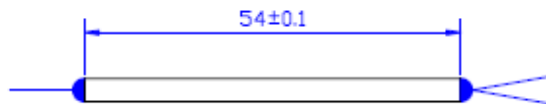
	PM Fiber Port	SM Fiber Port
Type 1	Panda Fiber	SM28e or Equivalent Fiber
Type 2	Panda Fiber	HI 1060 Fiber
Type 3	Panda Fiber	OFS 980-20 Fiber
Type 4	Panda Fiber	OFS 980-16 Fiber

Package dimension

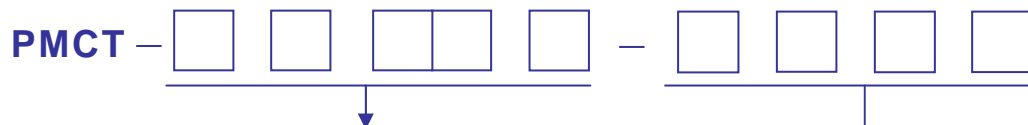
S4



S6



Ordering Information



Wavelength	Structure	Splitting Ratio	Grade
4 - 1550 nm	1 - 1x2	05 - 99.5:0.5	P - Premium
5 - 1480 nm	2 - 2x2	99 - 99:1	A - A grade
7 - 1310 nm		98 - 98:2	
8 - 1064nm		95 - 95:5	
9 - 980nm		90 - 90:10	
B - 633nm		80 - 80:20	
L - 780nm			
K - 830nm			

Package	Fiber Type	Fiber Length	Connector
3 - S4 with 250μm bare fiber	1 - Type 1	0 - 0.5m	0 - None
5 - S6 with 0.9mm loose tube	2 - Type 2	1 - 0.75m	1 - FC/PC
	3 - Type 3	2 - 1.0m	3 - FC/APC
	4 - Type 4		

Contact Information

For more information about BATi's' leadership in photonics devices, visit our website at www.bostonati.com.

To obtain additional technical information or to place an order for this product, please contact us at:

Phone: 1-781-935-2800

Fax: 1-781-935-2860

E-mail: sales@bostonati.com